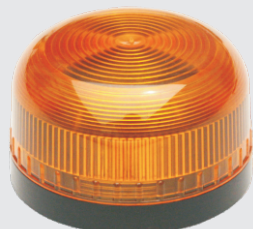


# LL126 Series Mini LED beacon

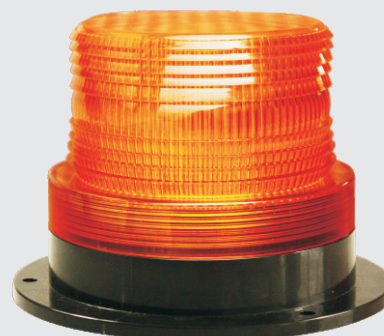
They'll see it from miles away!



LL126-1



LL126-2



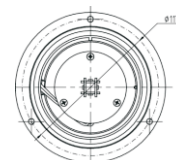
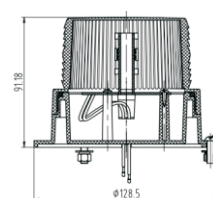
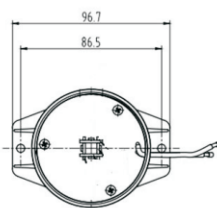
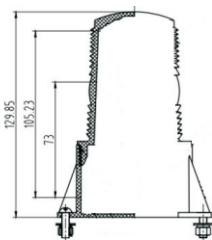
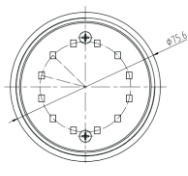
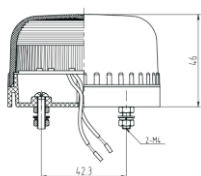
LL126-3

## Features:

- High transparency polycarbonate lens, high temperature resistance
- LED light source, long life, small size
- Easy mounting & operation, strong anti-vibration ability
- Widely apply to police, fire, engineering and other special vehicles

**Available Colors** ■ ■ ■ ■

Colors are optional within red, blue, amber and white; Available in different lengths according to customer requirements.



## Technical Parameter:

Model	L(mm)	H(mm)	Working Voltage	Working Current	Rated Power
LL126-1	Φ75.6	46	10-36VDC	0.3A max @12VDC	1W
LL126-2	Φ96.7	129.85	10-110VDC	1A max @12VDC	4W
LL126-3	Φ117	91	10-110VDC	1A max @12VDC	4W

**SENKEN**

Senken Group Co.,Ltd  
160, West Yue Le Street, WenZhou

Tel: +86-577-88090011  
Fax: +86-577-88098159  
E-mail: export@senken.com.cn  
www.senken-international.com